


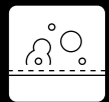



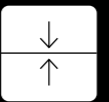







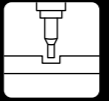



Cutting-edge technology in composite solid surfaces.

Applications

- Benchtops
- Vanities
- Desktops + tabletops
- Induction splashbacks
- Toilet partitions
- Lockers + seating
- Wall panels

Product Attributes

							
Fingerprint Resistant	Protect+ Antibacterial	Heat Resistant	Scratch Resistant	Impact Resistant	Ultra Thin Profile	SuperMatte Finish	UV Stable Indoor Use
							
Horizontal Application	Vertical Application	Induction Splashback	Fast Installation	3.6m Extra long slab size	Routing Capability	Made in Australia	

Cover
 Steel-supported overhead shelf in Fusion Pewter 13mm.
 Bench top and floating bottom edge in Fusion Pewter 13mm.
 Central Finger pull edge in Fusion Pewter 13mm. Splashback Fusion Pewter in 6mm. Drawer faces in Laminex AbsoluteMatte Pewter.

Opposite
 Benchtop in Fusion Black 13mm. Bench base vertical fins in Fusion Black 13mm. Bench base in Laminex AbsoluteMatte Black. Shelving blades in twin Fusion Black 13mm with expressed central shadowline and central steel support. Right island end panel Laminex AbsoluteMatte Black.



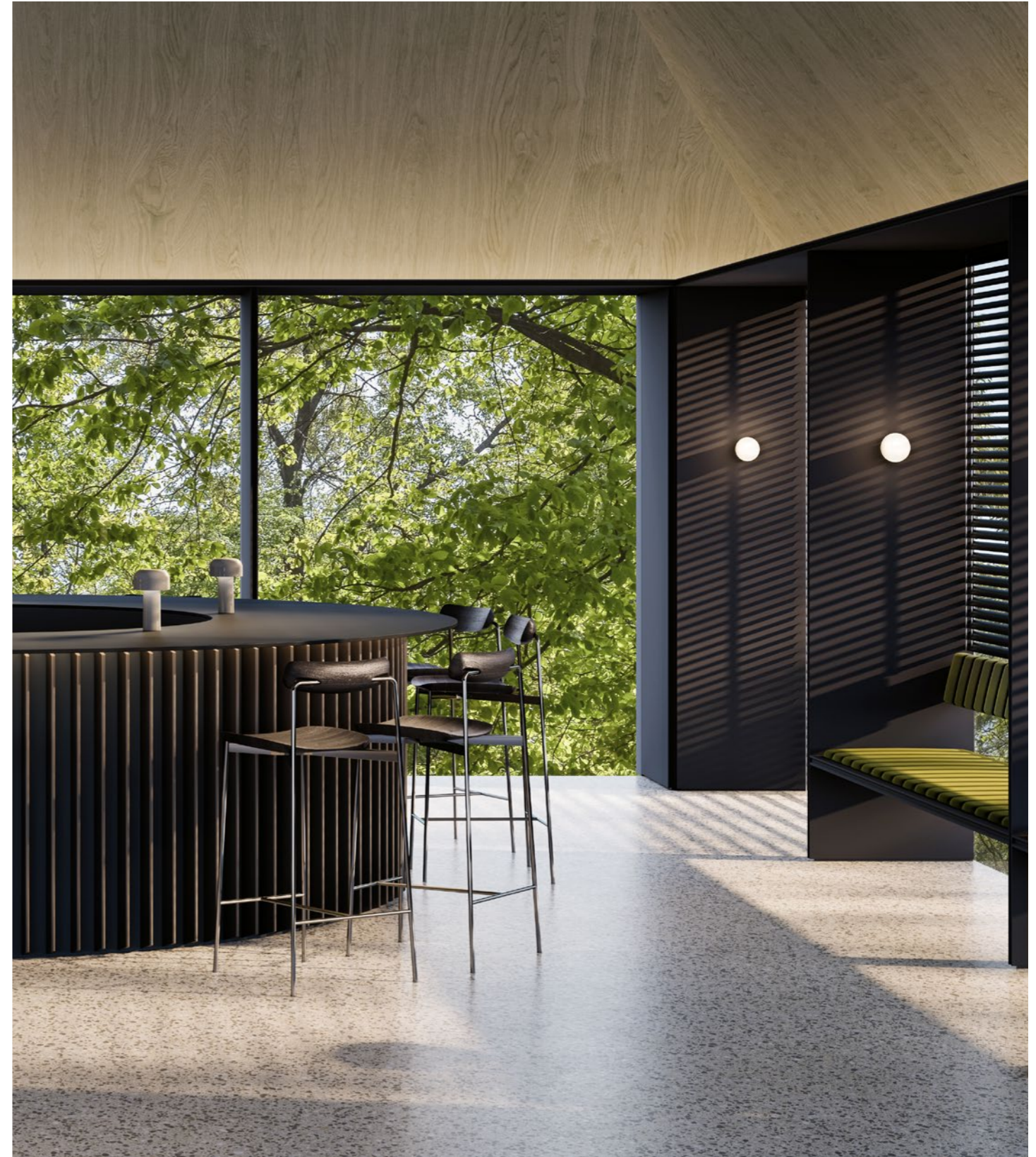
Slimline + SuperMatte

Fusion harnesses cutting-edge technology to meet the growing desire for slimline benchtops and interior surfaces, with its highly durable fingerprint-resistant SuperMatte finish and colour-matched core producing a sleek, seemingly homogenous surface material.

Super-slim benchtops are irresistible for the contemporary minimalist edge they bring to modern kitchens. However, many materials, including engineered stone, aren't available in thin profiles. And the ones that are, such as porcelain, can be challenging for fabricators and installers to work with.

Fusion Composite Solid Surfaces have no such problems. Their sleek, super-matte appearance and monochrome colour palette are inspired by the latest European kitchen and furniture designs; their durable surface is scratch and fingerprint resistant, and they can be cut to size and installed by cabinetmakers to avoid the costs and delays of specialist trades.

But Fusion isn't just for kitchens. It can bring cool minimalism to a wide range of indoor horizontal applications, from bathroom vanities and laundry surfaces to reception counters, cafe tables and more. It's also suitable for indoor vertical applications, and is available in a super-thin profile for induction splashbacks and wall lining.



Opposite

Bench top in Fusion Black 13mm. Vertical fins in Fusion Black 13mm. Bench base in Laminex AbsoluteMatte Black. Window seating partitions in twin Fusion Black 13mm with expressed central shadowline, internal steel structure. Overhead window reveal in Fusion Black 13mm.

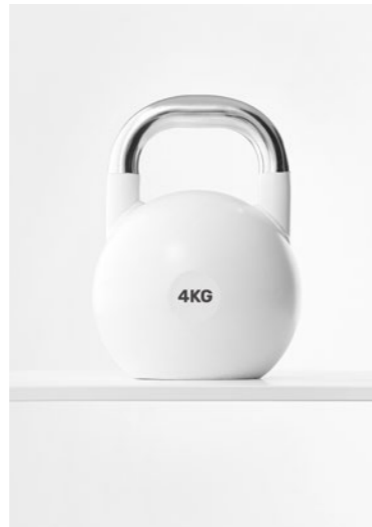
Designed for life

The refined look and feel of Fusion comes with hardwearing performance that will stand up to the rigors of daily life, in homes and commercial projects too. And it's great for designers and fabricators, because it's so easy to work with.



Slimline

Fusion's 13mm profile makes a strong contemporary statement in indoor horizontal applications like kitchen benchtops, but can be used for indoor vertical applications too. It's also available in a 6mm profile for induction cooktop splashbacks and wall lining.



Durable

Despite its thin profile, Fusion is strong, with a level of impact resistance suitable for residential kitchens, bathrooms and laundries, and commercial installations like reception counters, cafe tables and toilet partitions.



Scratch-resistant surface

Fusion is resistant to scratching from everyday use, and if light scuffs do appear on the surface, they can be reduced with a Magic Eraser Spot Cleaner sponge. Cutting boards should always be used for chopping and slicing in food preparation.



SuperMatte

The Fusion SuperMatte finish has a beautiful visual softness and is satin-smooth to the touch, making everyday tasks a genuine pleasure. Unsurprisingly, it pairs perfectly with cabinetry in Laminex AbsoluteMatte.



Easy cleaning

Thanks to InvisiTouch®, Fusion requires less maintenance than other matte surfaces. And when cleaning is required, oily marks can simply be removed with diluted mild dishwashing liquid and a microfibre cloth.



Fingerprint resistant

Fusion is manufactured with InvisiTouch®, a world-leading surface technology that reduces its SuperMatte finish from being marred by fingerprints and other marks, so it stays looking great with less cleaning.



Routable

Black-core Fusion can be routed with lettering, icons, shapes, patterns and sink drainage grooves. This makes it an ideal solution for indoor wayfinding signage and creates opportunities for architects and designers to introduce decorative elements into interior spaces. Routing is warranted for Black Fusion only.



Resistant top and bottom surfaces

The Fusion surface is resistant to staining from pigmented substances such as wine or beetroot juice, as long as spills are wiped away immediately. You must take care to avoid such substances coming into contact with Fusion edges – specifically in White- and Pewter-core Fusion.



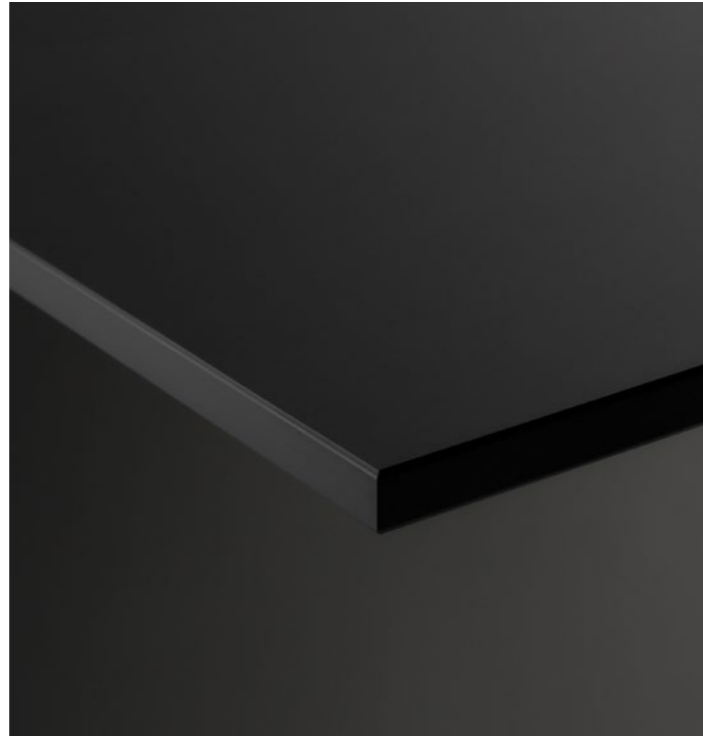
Easy fabrication

Fusion can be cut on a CNC machine and, thanks to its colour-matched core, doesn't require edging. So both fabrication and installation can be handled by cabinetmakers without the need for additional specialised trades.

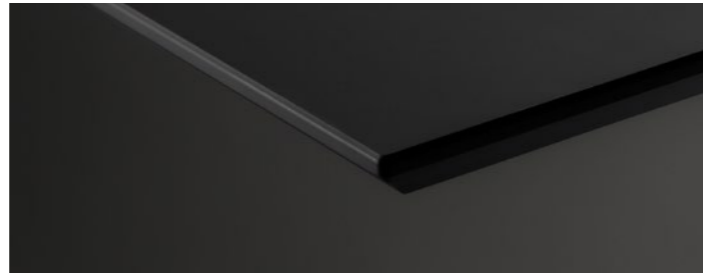
Modern Minimalism

Fusion embodies a modern, minimalist aesthetic, supported by a restrained monochromatic colour palette. There's warm-based White, mid-tone grey Pewter and true Black – three timeless neutral decors that will complement a wide range of interior schemes and work beautifully with natural timbers and concrete. A selection of three edge profiles brings subtly different visual effects.

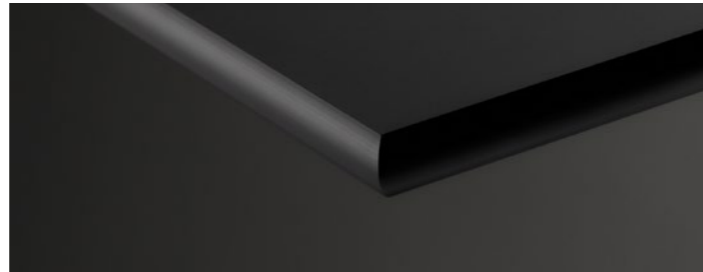
13mm
Aris Edge



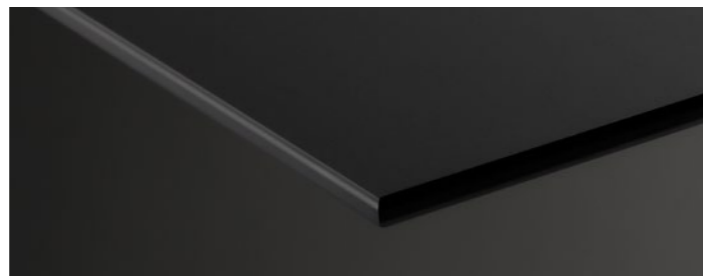
13mm
Sharknose Edge



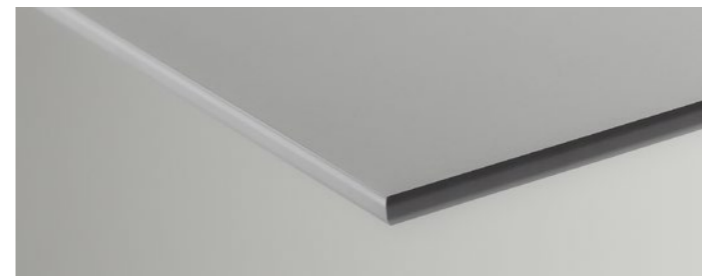
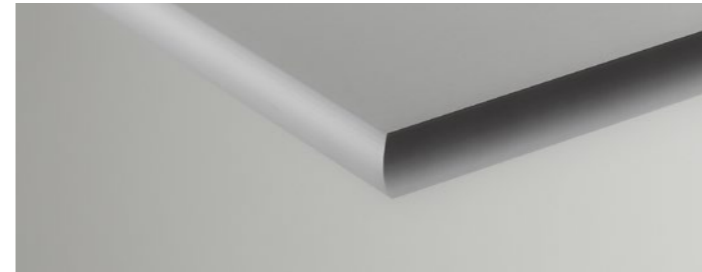
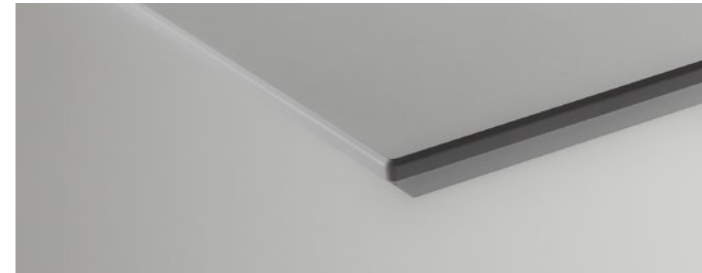
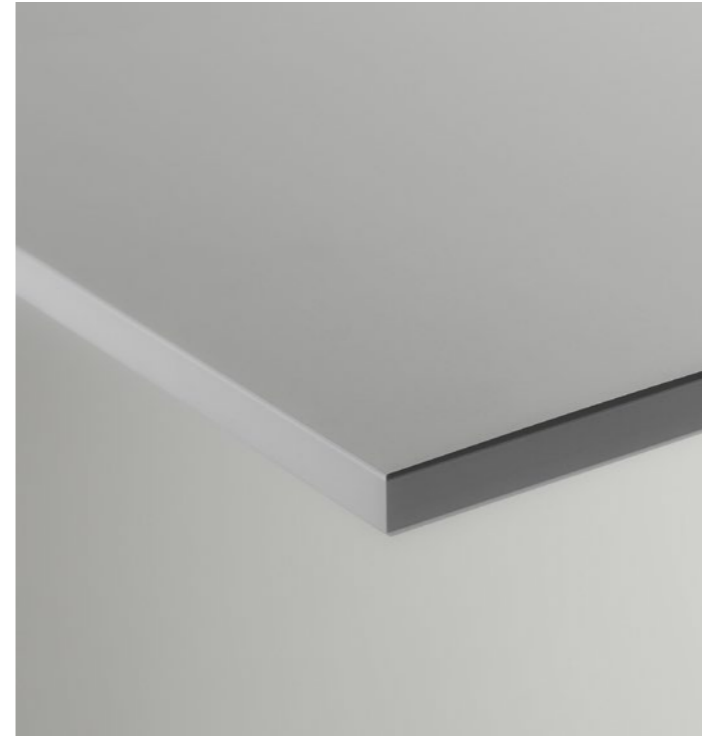
13mm
Bullnose Edge



6mm
Aris Edge



Black



Pewter



White

Product information

Fusion Composite Solid Surfaces are designed, developed and manufactured in Australia. The full range of thicknesses, slab sizes, decors and edge profiles are held in stock at all of Laminex Australia's distribution centres, ready for delivery.

Application

Fusion is available in two thicknesses:

- 13mm (benchtops and other horizontal surfaces, partitions)
- 6mm (induction cooktop splashbacks, wall linings)

Slab size

Fusion is available in two slab sizes:

- 3600mm x 1500mm (13mm / 6mm)
- 3600mm x 750mm (13mm / 6mm)
- Cut-to-size offer also available

	13MM		6MM	
	Full Slab 3600x1500	Half Slab 3600x750	Full Slab 3600x1500	Half Slab 3600x750
BLACK	✓	✓	✓	✓
PEWTER	✓	✓	✓	✓
WHITE	✓	✓	✓	✓

Fast and easy installation

Joiners and cabinetmakers can fabricate and quickly install Fusion themselves.

- Easy to handle
- Lighter than stone
- Adjustments and cut-outs can be made on-site

Designed and made in Australia



Fusion is locally manufactured and readily available for order.

- Stocked nationally in full and half sheet sizes
- Raw materials are FSC Controlled Wood certified

Technical and warranty information



All our technical information, including Availability Guides, Fabrication Manual, SDS, Technical Data Sheets, Warranties, and Care and Maintenance Guides are located online at fusionsurfaces.com.au

7 Year Limited Warranty

Fusion has a 7 Year Limited Warranty.



Opposite
Concierge desk top and desk face Fusion Pewter 13mm.

For trade and specifier enquires,
please contact 13 21 36

fusionsurfaces.com.au

-FUSION®

Fusion® is manufactured, marketed and distributed by Laminex Group Pty Limited ABN 98 004 093 092, trading as Laminex. Fusion® is a registered brand of the Laminex Group Pty Limited. The colours and finishes for all imagery and product swatches in this brochure may vary due to paper, printing processes and photographic lighting. For an accurate representation of the product, please view a physical sample. Please obtain a copy of the terms and conditions of the applicable warranties from laminex.com.au. All warranties are in addition to any rights that may exist under the Australian Consumer Law. Laminex®, Fusion®.